

CPA Proposal:

" Preservation, Rehabilitation, Restoration and Improvements to the Somerville Community Path"

- Surface Repaving
- Stone dust side path for joggers
- Drainage improvements
- Interpretive installation Historical RR artifacts



Alan Moore, Friends of the Community Path (FCP)

Presentation to the CPA Committee, January 27, 2016

Quick Overview of the Community Path

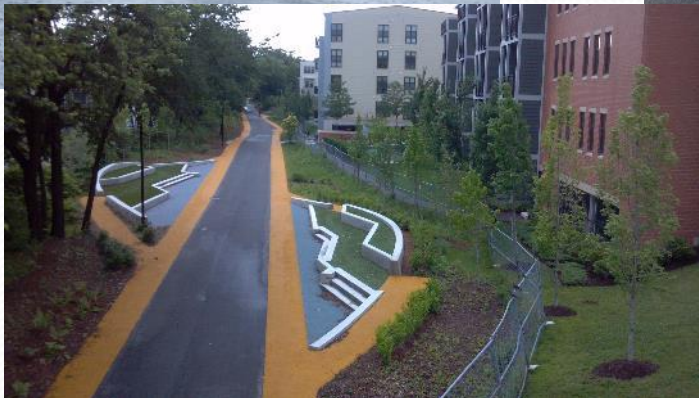
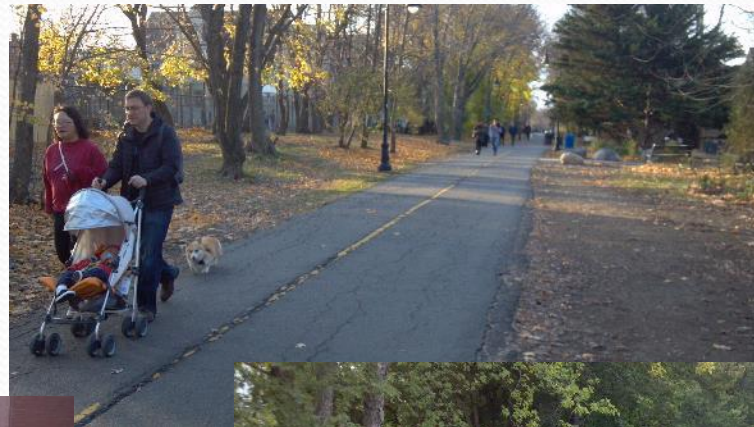
- **Safe, off-street linear park for children and mobility-impaired**
- **Important open space resource for Somerville**
- **Active transportation to Davis Square T station, schools, etc.**
- **Community gatherings, foot races, Halloween parade**
- **Extensively used for recreation, exercise**
- **Major amenity for the City**
- **Second largest open space**
- **Community gardens**

10% Cyclists, 90% Pedestrians



CPX - Short History/Milestones

- **1985** - Linear Park opens above the Red Line from Alewife to Davis Sq.
- **1994** - “Bike Path” extended from Davis Sq. east to Cedar St.
- **2001** - Friends of the Community Path founded (Not just a Bike Path)
- **2015** - Cedar-Lowell section extension opens officially



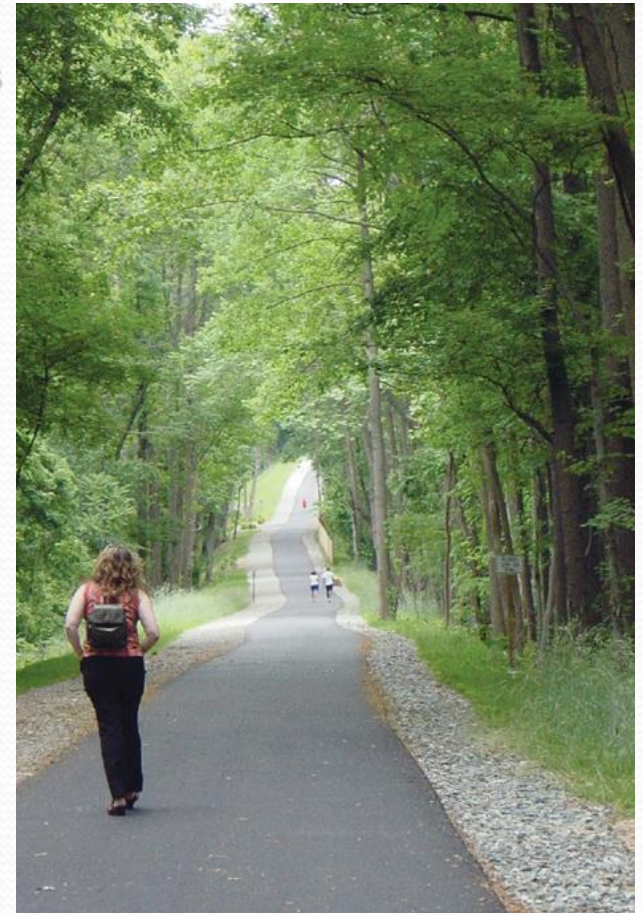
Present challenges to the Community Path

- Pavement deterioration after 20-30 years without surface maintenance
- Puddling and ice after storms because of poor drainage (clay soils) and grading, level RR grade often makes the Path unusable

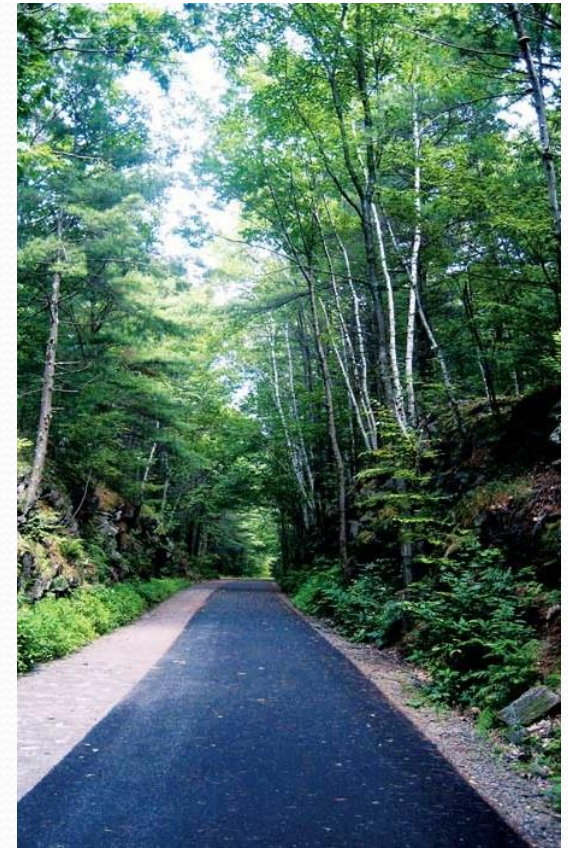


Open Space, Recreation and Historic Preservation Opportunity for CPA Funding

- Re-pave from Cambridge line to Cedar St.
- Add stone dust/wood chip side paths for runners
- Re-grade to improve drainage and/or install rain gardens. Evaluate community garden locations
- Install/display railroad artifacts for historical context/education



Re-paved Community Path with side paths



Regrading to direct storm water to Rain Gardens to increase infiltration, reduce puddling

- Opportunity for youth involvement (Groundwork Somerville)
- Partnering with Clay Larsen, experience with path building and rain gardens (with Groundwork Somerville and Bike to the Sea)



Simple to build

Captures stormwater from impervious areas and infiltrates into ground

Opportunity for education and outreach

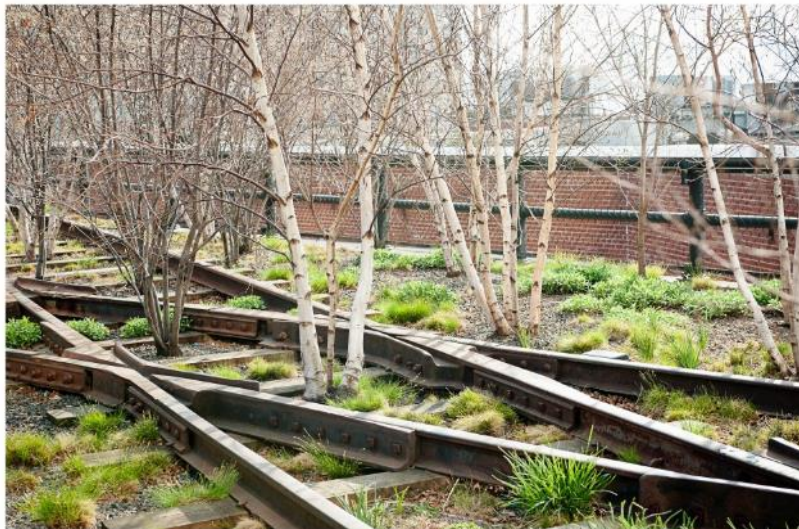
Other Examples of Rain Gardens



The Railroad Artifacts (saved by the FCP and the City) to be Installed/Displayed



Examples of Other Railroad Artifact Installations



Project Implementation

- **Community meetings and resident input for final design (\$12K)**
- **Cooperative support from City Departments (DPW, Engineering and Strategic Planning and Community Development, Historic Preservation)**
- **Managed by a civil and environmental engineer with path design experience (15% contingency budget part of the \$301K)**
- **Quotes for re-paving and re-grading from contractors with extensive path experience (estimated \$180K)**
- **Design and installation of rain gardens by landscape architect and Groundwork Somerville (estimated \$37K)**
- **Railroad artifacts installation design by artist, historian and landscape architect (estimated \$20K)**
- **Possible community garden expansion or creation (\$27K)**

Friends of the Community Path

friendspath@yahoo.com
617.776.7769

facebook.com/FriendsoftheCommunityPath
twitter@pathfriends
www.pathfriends.org/scp/



QUESTIONS: